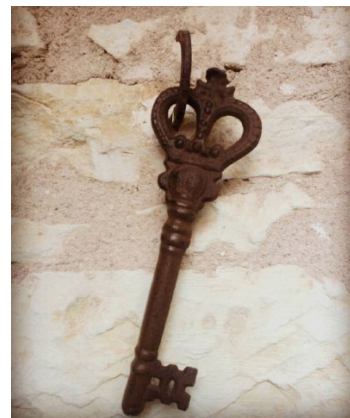


LOCAL STAY TAX



In order to improve your stay in Haut-Poitou, we ask our hosts to collect on our behalf, a local stay tax. It is exclusively intended to fund our activities in the Field of tourism.

The tax is due for all categories of tourism accommodation, when visitors pay a fee or rent hotels or any other form of furnished accommodation (including «gîtes» and «chambres d'hôtes»), holiday villages (including «colonies de vacances» and accommodation for groups) and all kind of outdoor accommodation (campsites or caravan sites).

Enjoy your stay in Haut-Poitou!

Local stay tax will be added to the price of your stay. This tax will be collected by the accommodation provider you are staying at, on behalf of de la Communauté de communes du Haut-Poitou and Conseil départemental de la Vienne. This tax is based on the type of accommodation and the number of people.

CASES OF EXEMPTION

- > Minors / People under 18
- > Seasonal contractors employed on the Territory
- > People who rent a room which has a price under 5€ per day
- > People benefiting from an emergency housing or a temporary rehousing

Applicable rate per person and per night

Catégories d'hébergement	Tarifs*
Luxury hotels	4,40 €
5 stars: Hotels, holiday residences, furnished flats of tourism	2,20 €
4 stars: Hotels, holiday residences, furnished flats of tourism	1,43 €
3 stars: Hotels, holiday residences, furnished flats of tourism	1,10 €
2 stars: Hotels, holiday residences, furnished flats of tourism. 4 and 5 stars Vacation Villages.	0,88 €
1 star: Hotels, holiday residences, furnished flats of tourism. 1, 2 and 3 stars Vacation Villages, Bed & Breakfast, community accommodations	0,77 €
3, 4 and 5 stars campsites, camper van's areas and tourist carparks for a duration of 24 hours	0,55 €
1 and 2 stars campsites	0,22 €
Regarding the ceiling rate per person and night, this amount may not exceed the highest rate set by the local authority (€4.40 including the additional tax).	4% of the retail price + 10% of dept part

Local stay tax is determined according to the «Code Général des Collectivités Territoriales».

CONTACT
Service Tourisme
taxedesejour@cc-hautpoitou.fr

Communauté de Communes du Haut-Poitou
10 avenue de L'Europe
86170 Neuville de Poitou
05 49 51 93 07

HAUT
POITOU
Communauté de Communes